

**THANK YOU FOR PURCHASING****THE SAWBONES ARTHROSCOPY ELBOW MODEL**

This arthroscopy model may be used for diagnostic and visualization skills including triangulation and pathology identification. Loose body removal may also be performed. The model may be manipulated in pronation and supination. Custom inserts can be developed for specific applications upon request. With a little care and maintenance your new model should provide you with many years of service.

**COMPONENTS & ANATOMY****MODELS INCLUDE:**

- Soft tissue elbow
- Elbow bone insert
- Bone clamp
- C-clamp

ANATOMICAL STRUCTURE:

- Cartilage erosion of the capitellum
- Radial head fracture
- Multiple loose bodies

NOTE: Replacement parts available at www.sawbones.com

**SET-UP INSTRUCTIONS**

1. Attach the bone and C-clamp combination to attach the model to the table as shown.
2. You may position the model in a variety of ways.

INSERT REMOVAL & REPLACEMENT



BONE INSERT REMOVAL:

1. Remove the model from the bone clamp.
2. Remove the Velcro strip from the posterior section of the soft tissue sleeve.
3. Retract the soft tissue to gain access to the insert.
4. Remove the proximal humerus first.



BONE INSERT REPLACEMENT:

1. Retract the soft tissue slit with fingers.
2. Install insert into sleeve, ulna/radius first.
3. Fully seat within cavity.
4. Replace Velcro strip and reinstall model into bone clamp.

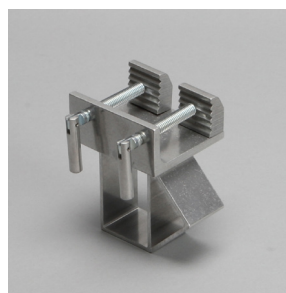
CARE & MAINTENANCE

Your model can be wiped down with any mild cleaner. Use only the dry erase marker on the model. Standard ink can not be removed. Store in a dry, dark place out of direct contact with sunlight.

REPLACEMENT PARTS (WWW.SAWBONES.COM)



1411-2
Elbow joint



1600
Bone clamp



1601
C-clamp